



GAT MONTHLY MEMBERSHIP PROGRESS REPORT

Results as of: 12/31/2021

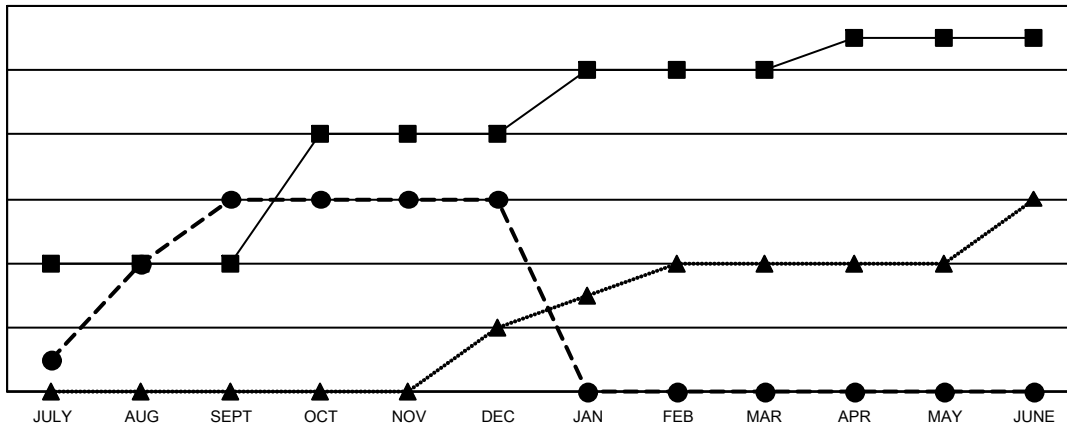
Multiple District 310

LOCATION: THAILAND

| Clubs | | | |
|-----------------------|---------------|-----------|---------------|
| RESULTS FOR 2021-2022 | | | |
| QUARTER | NEW CLUB GOAL | NEW CLUBS | DROPPED CLUBS |
| JULY/AUG/SEPT | 4 | 6 | 1 |
| OCT/NOV/DEC | 4 | 0 | 2 |
| JAN/FEB/MAR | 2 | 0 | 0 |
| APR/MAY/JUNE | 1 | 0 | 0 |

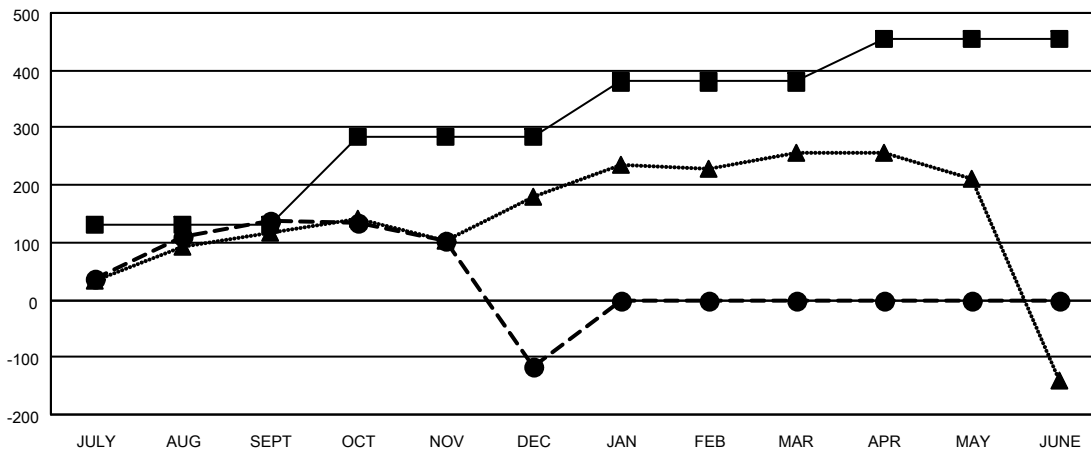
| Members | | | |
|-----------------------|------------------------|----------------------|--|
| RESULTS FOR 2021-2022 | | | |
| QUARTER | MEMBER GROWTH NET GOAL | MEMBER GROWTH ACTUAL | DROPPED MEMBERS ACTUAL (including transfers) |
| JULY/AUG/SEPT | 130 | 266 | 115 |
| OCT/NOV/DEC | 155 | 128 | 363 |
| JAN/FEB/MAR | 95 | 0 | 0 |
| APR/MAY/JUNE | 75 | 0 | 0 |

GOALS AND ACTUAL NEW CLUBS CUMULATIVE



- - CURRENT YEAR GOALS FOR NEW CLUBS
- - CURRENT YEAR ACTUAL NEW CLUBS
- ▲ - LAST YEAR ACTUAL NEW CLUBS

GOALS AND ACTUAL MEMBERS CUMULATIVE



- - MEMBER GROWTH NET GOAL
- - MEMBER GROWTH ACTUAL
- ▲ - LAST YEAR MEMBERSHIP ACTUAL

| | |
|-------------------------|------------|
| DROPPED CLUBS: 3 | |
| DROPPED MEMBERS | |
| DECEASED | 27 |
| CLUB CANCELLED | 25 |
| OTHER | 426 |
| TOTAL | 478 |

93 CLUBS OF 302 ADDED 1 OR MORE NEW MEMBERS

[CLICK HERE FOR CUMULATIVE MEMBERSHIP DATA](#)

| GENDER DISTRIBUTION | |
|---------------------------------|----------------|
| MALE | 3,576 (50.58%) |
| FEMALE | 3,494 (49.42%) |
| NON BINARY | 0 (0.00%) |
| PREFER NOT TO ANSWER | 0 (0.00%) |
| TOTAL FAMILY UNIT MEMBERS | 496 |
| FAMILY MEMBERS PAYING HALF DUES | 269 |